



A photograph of a man in a white long-sleeved shirt and dark trousers standing with his hands on his hips, facing a police officer. The officer is seen from the back, wearing a blue uniform shirt and dark trousers with a duty belt. They are in a room with shelves and equipment in the background.

"THE READINESS IS ALL"

William Shakespeare

Like lightening, dangerous situations can occur at any time without warning. Only those that recognise incidents early enough can react appropriately. The earlier the danger is detected, the more time remains to address it. Valuable time.

Only those who possess the highest possible level of detection and are able to react immediately when an event occurs, have optimum security. videte IT offers you the perfect digital 'partners' for this purpose.

And this is because the image recording systems and video-based security management systems from videte IT are true all-rounders. In any situation, you achieve the highest possible level of detection and rapid reaction using videte products. The equipment not only "sees" but can also "smell" and "hear". For example, the build up of

smoke or the breaking of glass can be registered and reported immediately. Information, such as images and text instructions, are quickly provided direct to the decision-maker, so alerts can be received without delay.

As a result of their high storage capacities, the videte IT systems have excellent "memory", which selectively saves only the material they are supposed to. This is done objectively, without perceptive distortions and with the highest possible quality images.

videte IT has the right system for you – from its value-for-money, easy-to-operate fully-featured systems through to complex high-end solutions. Flexible and individual. Everything of the highest quality, made in Germany.



View

>1 plus

12:



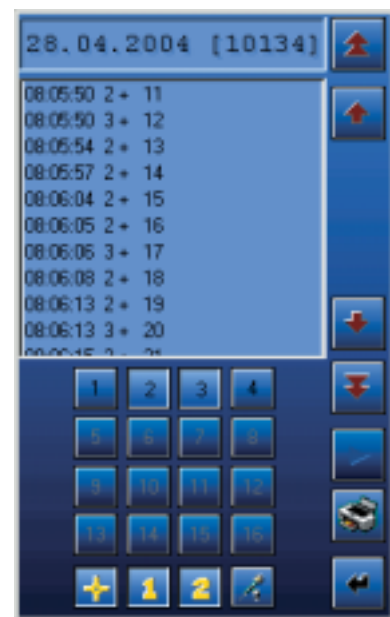
SIMPLY READY

Only those who concentrate on the essentials will be fully secure. This not only means managing service and technology – but concerns everyone fulfilling their own assigned tasks. The digital 'partners' from videte IT consistently keep this in mind.

Even as the technical requirements of security systems become increasingly complicated – videte IT systems remain extremely easy to operate. Their clear user interfaces are rapidly comprehensible to all and do not require lengthy training. Clear language, simple symbols.



As simple as a video recorder, but digital. The DTS user interface can be operated immediately, even by users without specialist knowledge.

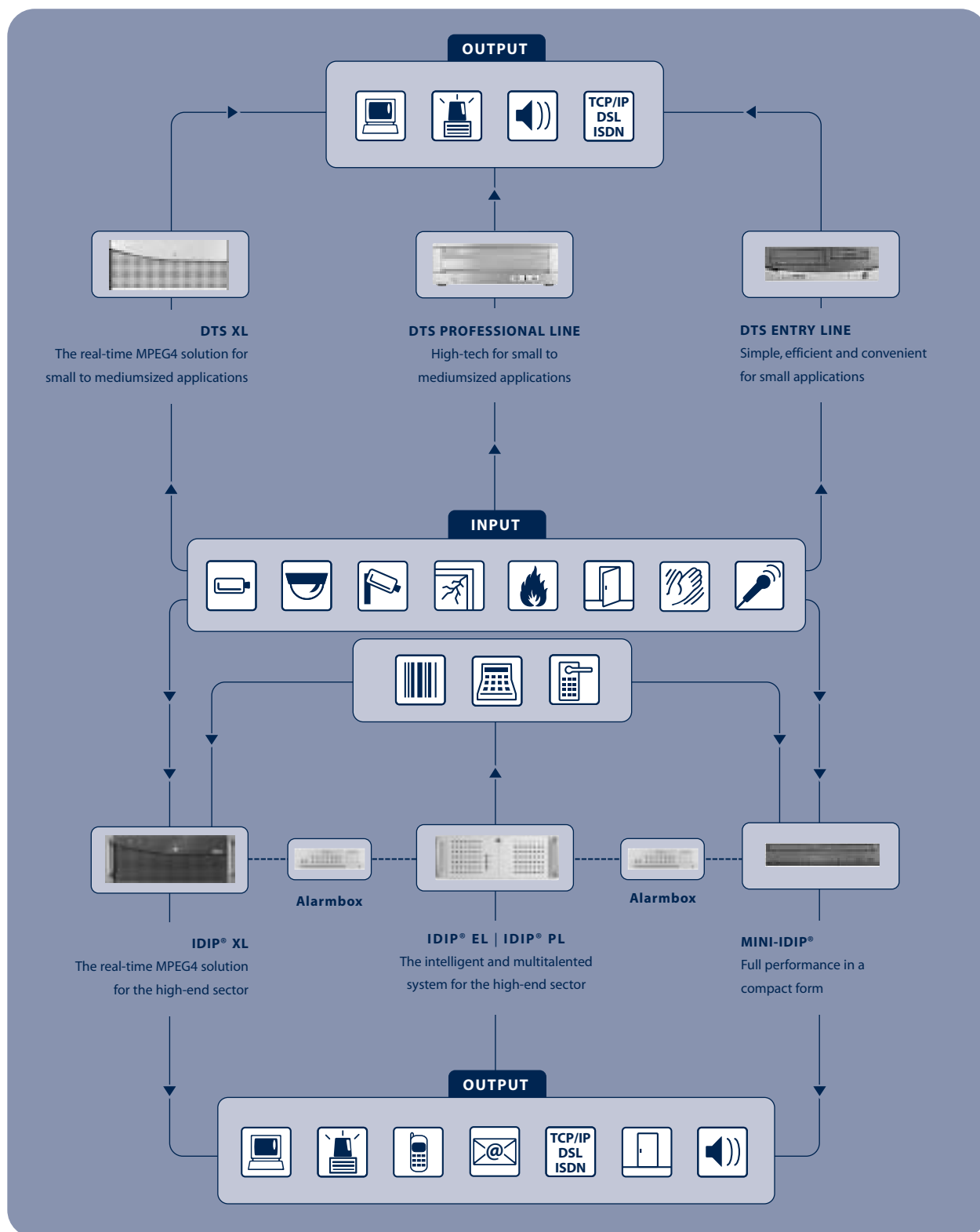


Simple: Convenient and clear search and archiving functions with DTS according to the camera, date, time of day, alarm and image section.



A familiar sight: The clear and well-known symbols on the idip user interface.

YOUR DIGITAL PARTNERS FROM VIDEOTE IT®



HIGH-TECH – EASY TO OPERATE

DTS PL



- Active alarm function
- Triplex function: Simultaneous display of live, alarm and archive images
- Convenient search and archiving functions
- Integrated backup technology
- Certified in accordance with the German security standard for cash transaction scenarios (UVV Kassen)
- Automatic multi-tasking

DTS XL

NEW!

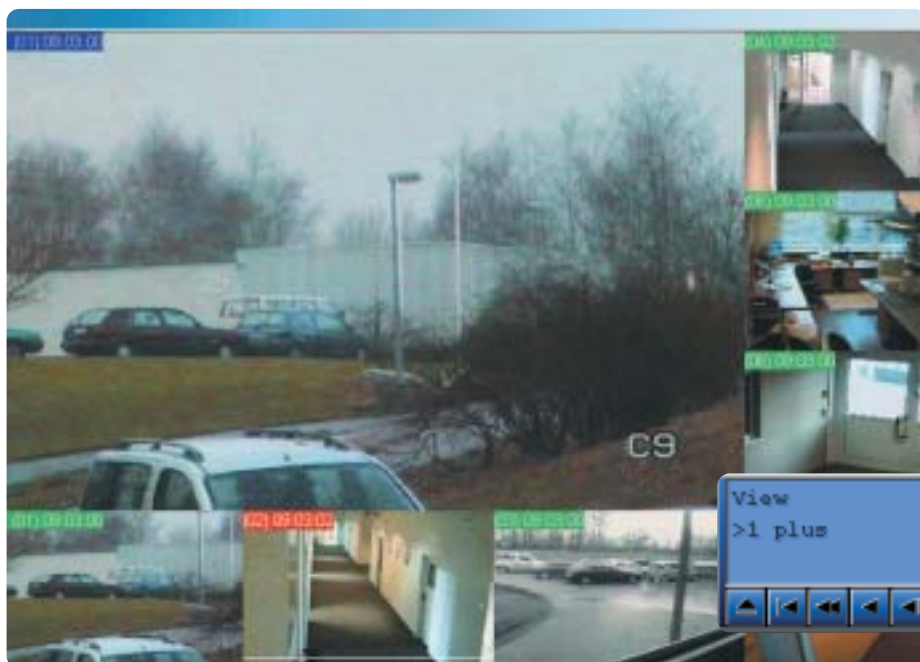


- MPEG 4 video compression/ transmission
- real-time recording on all channels, separate video image processing per channel
- no switching between the video channel – a real multi-channel recorder
- 4-fold improved motion detection
- Camera controlled via user interface

PLUG
&
PLAY

max
750 GB

max 16



Optimum detection options as a result of the simultaneous display of standby, alarm and archive images.

The patented user interface permits the intuitive and rapid operation of all functions.

With the DTS Professional Line, videte IT has developed an extremely attractive security solution for small to medium-sized monitoring applications supporting up to 16 cameras. The system also integrates multiple functionalities in one device: From multiplexer via time-lapse recorder to motion detector.

DTS Professional Line offers you the highest possible level of visual and sensory detection options and thus optimum security. Using its

Triplex function, it can create live, alarm and archive images simultaneously. Multiple images can be viewed side-by-side on one monitor in various, freely definable display options. The integrated motion detector permits event-driven recording. Therefore only significant monitoring events are recorded.

Integrated installation automation, such as automatic camera detection, ensures that installation expenditure is kept to a mini-

mum for DTS Professional Line. Integration into existing surveillance systems is possible without any difficulties.

The XL line combines existing functionalities with real-time MPEG 4 video compression and transmission.

It is a real multichannel recorder, as there is no switching between the video channels.

THE COMPACT DIGITAL POWERHOUSE

DTS EL



- **Highly cost-effective**
- **Simple user interface**
- **Active alarm function**
- **Triplex function: Simultaneous display of live, alarm and archive images**
- **Convenient search and archiving functions**
- **Simple installation**

PLUG
&
PLAY

max
250 GB

max 4



With DTS Entry Line, videte IT offers you a particularly economical and compact security solution. It is specially designed for small applications with up to 4 cameras. However, DTS Entry Line offers all the functionalities of a professional intelligent image recording system with first-class digital image quality. From multiplexer via time-lapse recorder to motion detector. Everything in one device.

DTS Entry Line is extremely powerful and even completes tasks simultaneously. You have everything conveniently on one monitor and can optimally monitor your security situation. Using the Triplex function, live, alarm and archive images can thus be dis-

played at the same time. In doing so, you have the option of choosing between various display options. As a result of integrated intelligent event-driven recording, only relevant data is stored. In addition, it has an active alarm function.

DTS Entry Line can be expanded and adapts to your individual security requirements. It is always possible to upgrade using additional videte systems. Your security management system grows practically with the requirements of your company.

The operation of DTS Entry Line is both simple and convenient. The functionality and hand-

ling features of this ultra-modern digital system have been adapted from the simplicity of a conventional video recorder. The patented user interface is impressive with its first-class comprehensibility. In addition, there are several convenient search functions according to camera, date, time of day, alarm and image section. The Plug and Play feature makes installation an incredibly speedy and easy process.



DTS Entry Line offers the most diverse options for highly efficient monitoring for small applications and factory environments. All this at no great expense, and with excellent effect.



THE FLEXIBLE DIGITAL MULTI-TALENTED SYSTEM

IDIP® EL | IDIP® PL



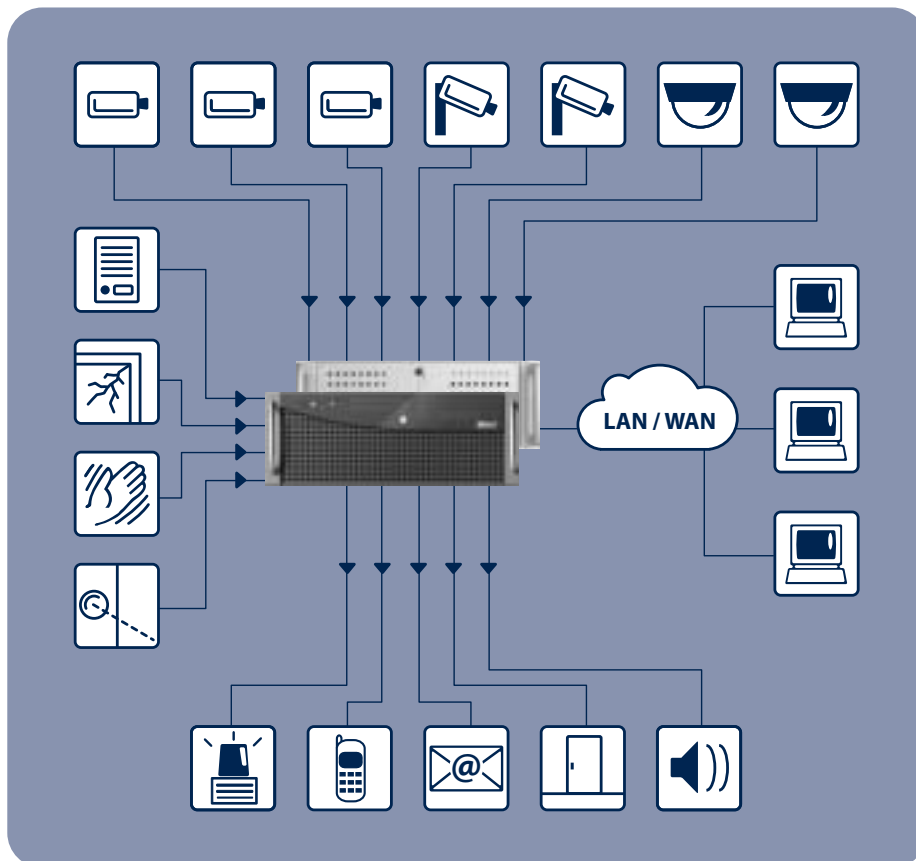
- Flexible, individual, easy to integrate
- The most diverse linking options for all components
- Programmable responses to events
- Active, selective alarm function via the transmission of images and reports
- Expandable through cascading

IDIP® XL

NEW!



- MPEG 4 video compression/ transmission
- real-time recording on all channels, separate video image processing per channel
- no switching between the video channel – a real multi-channel recorder
- 4-fold improved motion detection
- Optimised user-friendly interface
- Camera controlled via user interface
- Variable rate of recording for each camera



Through the use of extensions, the connection options for idip are practically unlimited.

With idip, videte IT offers you an intelligent and multi-talented security management system. idip expands your detection and response options many times over and has everything consistent with the highest-level security requirements. Digital image recording, the use alarm detection engineering and support of all commonly used transmission paths. All this in one single device. Using idip opens up practically unlimited deployment options for medium-sized to very large applications – easy to integrate, flexible and individual.

idip acts as the “brain” behind your security management system. This is where the intelligent and functional interaction of all connected security components takes place. Using idip, you can network these components freely according to your needs and adapt them to your completely individual security requirements.

Expand your awareness through as many cameras, broken glass detectors, smoke detectors and entrance controls as desired.

Enhance your response capabilities by means of an automatic emergency call, production stop or activation of the lighting system. idip is your completely personal digital partner: It even sends advice, instructions and information to responsible employees or communicates with other systems. In addition, idip can be integrated into existing video and security systems or cascaded with further idips and all other videte IT systems. With idip – everything's possible.

idip is the ideal system ideally suited to large buildings, branch & remote sites, as well as for monitoring industrial production and logistics.



**THE COMPACT MULTI-
TALENTED SYSTEM WITH
EXTENSIVE CAPABILITIES**

MINI IDIP®



- **Connection of up to 4 cameras**
- **Simultaneous recording, reproduction and remote transmission**
- **Storage can be based on integrated motion detectors or alarm-driven**
- **Freely definable allocation of the alarm inputs, relays and cameras**



Mini idip is the compact multi-talented system with huge options. It is so small, it even fits inside an ATM.

Mini idip is an intelligent and multi-talented system in a compact format. It is specially designed for small monitoring applications with up to 4 cameras. It offers you the highest level of detection options by satisfying the highest security requirements: Digital image recording at the highest level of quality, danger alarm and security management system in one device. All common transmission paths are supported. The

multi-talented Mini idip – almost unlimited deployment options.

It represents the ultra-fast, independent, reaction & control unit of your security system. The intelligent and functional interaction of all connected components takes place under one single operator-friendly user interface.

THE DIGITAL EXPANSION OPTION



Using the Alarmbox, your idip systems can become even more multi-faceted. The Alarmbox is an add-on module providing a further 16 alarm inputs and 8 alarm outputs. It is an economical, easy-to-install option for the further expansion of your security management system. It can thus be adapted again and again to suit the changing requirements of your company. Effective digital expansion options – the Alarmbox.

| | |
|---------------------------------|---|
| USB type | USB Version 2.0 High-Speed (480 Mbit/s) Device |
| USB connection | USB cable: Type A to B max. 5 m |
| Power consumption | 5 V USB Bus Power - max. 100 mA. Externally regulated 7.5 V plug-in power supply 12 VA with Input: 100-240 VAC EURO, Output: 7.5 VDC / 1300 mA Average power consumption: With all relays and LEDs active: Approx. 600 mA |
| Alarm outputs | 8 alarm outputs (8 relays) Relay contacts: Usable per relay: 1 NO, 1 NC and 1 common Max. loading of the relay contacts according to the data sheet: Voltage rating / max. voltage 250 VAC; Base load current 3 A Rated switched voltage (ohmic load) 125 VA Max. switching frequency without rated load 20 switch plays per second Mechanical useful life (switching plays) 20 x 10 ⁶ Ports / plugs 12-pin: Rated current: 4 A; rating voltage: 80 V |
| Alarm inputs | 16 alarm inputs Freely definable setting of the alarm signal type: Break/or make contact separated for each input; Connection of potentially free break or make contacts as desired Ports / plugs 8-pin: Rated current 4 A; rating voltage 80 V Pull-up resistance 470 Ω |
| Write/read access | Write access: Setting or resetting a relay or alarm output typically requires 20 ms. Read access: The alarm inputs are typically polled every 100 ms. |
| Casing dimensions | The casing is 19-inch-compatible, i.e. it is intended for inclusion in a 19" cabinet – max. 3 devices side-by-side. Aluminium basic casing: 150 mm (1/3 19" width) x 43.6 mm (1HE) x 136.8 mm. It is possible to replace the 1/3 19" basic casing front side (front panel) with complete 19" front panels – for one, two or three devices. Weight: 0.650 kg |
| Environmental conditions | 5° C - 40° C ambient temperature Air humidity 95 % non-condensing The above data are based on an ambient temperature of 25° C. |

WE KNOW WHAT TRUST MEANS



Our clients' integrity is paramount. As a leading supplier of security equipment we value the trust our clients place in us.

DEVELOPMENT AND PRODUCTION – AT VIDETE IT®, EVERYTHING COMES FROM A SINGLE SOURCE

videte IT boasts over 14 years of experience in the development of security management systems.

videte IT was founded in Kiel, Germany and became a public company at the beginning of 2003. Our greatest value is placed on our development and production that comes

from a single source. All products are developed and made in Germany guaranteeing high quality on an international basis.

The most important matter for us is security. In order to satisfy this, videte IT develops top-quality technology of the highest level. However our customers and the people who

work with videte IT products on a daily basis, always remain our core focus. Therefore simplicity, rapid operability, excellent consulting and service have the highest priority.

videte IT – Reliably providing your security.

TECHNICAL DATA

| | DTS EL | DTS PL | DTS XL |
|---|---|--|---|
| Video inputs | 4 x FBAS 1 Vss, 75 Ohm | 8 or 16 x FBAS | 8 or 16 x FBAS |
| Video output | 4 x FBAS (of which 2 x Loop) | 4 or 8 x FBAS | 4 or 8 FBAS |
| Video standard | PAL | PAL / NTSC | |
| Resolution | 768 (H) x 280 (V) 384 (H) x 280 (V) [PAL] | 720 (H) x 280 (V) 360 (H) x 280 (V) [PAL] | 704 (H) x 280 (V) 352 (H) x 280 (V) [PAL] |
| Compression procedure | JPEG optional H.263 for image transmission via ISDN | | MPEG 4 |
| Compression stages | 6 | | |
| Hard drives | 160 or 250 GB | 160 to 750 GB | 160 to 750 GB |
| Record speed | Up to 25 fields per second | | |
| Multi-channel operation with max. No. of cameras | Up to 3 fields/sec | Up to 2 fields/sec | Up to 25 fields/sec |
| Memory groups | Dynamic ring memory, alarm / advance alarm memory, alarm lists | | |
| Backup | 3.5" disc drive, CD-RW / DVD-RW drive (optional) / USB media | | |
| Operating elements | Mouse (included) | | |
| Alarm inputs | One alarm contact per camera | Two alarm contacts per camera | 8 or 16 |
| Alarm outputs | 1 freely definable relay output, can also be used as a fault detector if desired | | |
| Tilt-swivel cameras | Baxall, Elbex, Ernitec, Fastrax, Panasonic, Sensormatic, Sony VISCA, VCL | | |
| Interfaces | 1 x RS-232 serial (9-pin D-Sub) 4 x USB 2.0 1 x parallel, 1 x 10/100 Mbit Ethernet | | |
| Menu languages | German, English, French, Spanish, Portuguese | | |
| Power supply | 110-240 V AC / 47-63 Hz | 110-235 V AC / 50-60 Hz | 100-235 V AC / 50-60 Hz |
| Audio | Bi-directional audio transmission, audio recording in MP3 | | |
| Power consumption | Max. 200 Watt | Max. 300 Watt | Max. 300 W |
| Temperature range | +5°C to + 40°C | | |
| Casing dimensions | 100 (H) x 430 (D) x 325 (W) mm | 140 (H) x 477 (D) x 425 (W) mm | 19" Industriegehäuse 4HE ; 177 (H) x 466 (D) x 422 (W) |
| Weight | 8 kg | 10 kg | ca. 20 Kg |
| Available options | ISDN 64/128 Kbit, CD-RW drive incl. Software idip® Receiver Software DVD-RW/+RW drive incl. software DTS Net Receiver Software | | |

TECHNICAL DATA

| | MINI IDIP® | IDIP® EL PL | IDIP XL |
|---|--|--|---|
| Video inputs | 4 x FBAS 1 Vss, 75 Ohm | 4, 8, 16, 24 or 32 x FBAS | 8, 16, 24 or 32 x FBAS |
| Video output | 4 x FBAS (of which 2 x Loop) 1 x VGA (1,024 x 768 pixels), 75 Hz horizontal | 2, 4, 6 or 8 x FBAS | 4, 8, 12 or 16 FBAS |
| Video standard | PAL | PAL / NTSC | |
| Resolution | 768 (H) x 280 (V) 384 (H) x 280 (V) [PAL] | 720 (H) x 280 (V) 360 (H) x 280 (V) [PAL] | 704 (H) x 280 (V) 352 (H) x 280 (V) [PAL] |
| Compression procedure | JPEG optional H.263 for image transmission via ISDN | | MPEG 4 |
| Compression stages | 10 | | |
| Hard drives | 160 or 250 GB | 160 to 1000 GB | 160 to 1000 GB |
| Record speed | Up to 25 fields per second | | |
| Multi-channel operation with max. No. of cameras | Up to 3 fields/sec | Up to 2 fields/sec | Up to 25 fields/sec |
| Memory groups | Ring memory, alarm memory, advance alarm memory Total of 65,000 memories can be configured | | |
| Backup | CD-RW drive (optional) | 3.5" disc drive DVD-RW/-R/+RW/+R, network | |
| | USB media | | |
| Operating elements | Mouse and keyboard (included) | | |
| Alarm inputs | 4 camera-independent alarm contacts extensible with the alarmbox | 4, 16, 32, 48 or 64 camera-independent alarm contacts | 8, 16, 24 or 32 camera-independent alarm contacts |
| Alarm outputs | 1 freely definable relay output; can also be used as a fault detector if desired extensible with the alarmbox | 1, 4, 8, 12 or 16 freely definable relay outputs, of which 1 relay can be used as a fault detector | 1, 2, 3 or 4 freely definable relay |
| Tilt-swivel cameras | Baxall, Elbex, Ernitec, Fastrax, Panasonic, Sensormatic, Sony VISCA, VCL | | |
| Interfaces | 1 x RS-232 serial (9-pin D-Sub) 4 x USB 2.0 1 x parallel, 1 x 10/100 Mbit Ethernet | 2 x USB 2.0 | 4 x USB 2.0 |
| Menu languages | German, English | | |
| Power supply | 100-240 V AC, 50-60 HZ external mains power supply (included in the scope of supply) or 12 V 5 A | 100-235 V AC (+/- 10%), 50-60 Hz | 110-240 V AC / 47-63 Hz |
| Audio | Bi-directional audio transmission, audio recording in MP3 – optional | | |
| Power consumption | Max. 60 Watt | Max. 300 Watt | Max. 300 W |
| Temperature range | +5°C to + 40°C | | |
| Casing dimensions | 63,5 (H) x 273 (D) x 295 (W) (in mm) | 19" case 4U; 177 (H) x 466 (D) x 422 (W) | 19" case 4U; 177 (H) x 466 (D) x 422 (W) |
| Weight | 3,2 kg | 25 kg | ca. 20 Kg |
| Available options | ISDN 64/128 Kbit, CD-RW drive incl. Software, idip® Receiver Software DVD-RW drive incl. software, 2nd VGA output WLAN, 1 GBit Ethernet, Tokenring, RAID | | |
| Available software modules | Spectra ICPCON alarm modules, ATM interface, access controls, barcode scanner, time control | | |

FUNCTIONS

| | DTS EL | DTS PL | DTS XL |
|--|--|--------|--------|
| Recording | Automatic image recording in the event of motion detection or contact trigger | | |
| Motion detection | Activity detection via freely definable levels, automatic masking out of continuously moving objects | | |
| Reproduction | Individual image, reproduction, fast forward / rewind, real time | | |
| Search criteria | Date, time, alarm list, and freely definable event search (image excerpt) | | |
| Display | Full screen, 1 plus, square display | | |
| Motion detection display | Cross-hairs | | |
| Video signal | | | |
| failure detection | Indication on the screen in the event of the loss of the video signal | | |
| Daily / weekly timer | Can be set for each camera | | |
| Alarm processing | Active alarm call to receiving station | | |
| Protection against unauthorised operation | Two password-protected user levels | | |

| | MINI IDIP® | IDIP® EL PL | IDIP® XL |
|--|---|---------------|----------|
| Recording | Camera images are recorded according to the setting event, time or contact-driven | | |
| Motion detection | Activity detection via freely definable levels, automatic masking out of continuously moving objects | | |
| Reproduction | Individual image, event reproduction, fast forward / rewind, time-synchronous reproduction of multiple cameras | | |
| Search criteria | Date, time, camera, archive, remote station, data (e.g. ATMs, account number, bank sort code) and freely definable event search (image excerpt) | | |
| Display | Full screen, 1 plus, square display | | |
| Motion detection display | | | |
| display | Cross-hairs | | |
| Video signal | | | |
| failure detection | Indication on the screen in the event of the loss of the video signal, acoustic alarm, email or SMS message | | |
| Daily / weekly timer | Freely definable time-switch clocks, camera independent configuration, possible definition of public holidays, possible linking of times – optional | | |
| Alarm processing | Transmission of images and / or messages to the receiving station or notification via email/SMS | | |
| Protection against unauthorised operation | Freely definable authorisation levels, user authorisation with authorisation levels, password assignment for local and network registration, mandatory registration of 2 users freely adjustable (4-eye principle), integrated Firewall (ISDN TCP) | | |
| Expanded functions of the IDIP® | Control call process, Pan, Tilt, Zoom (PTZ) camera control (optional), guard's patrol analogue video out (motion, manual, sequencer) | | |

ARE YOU SATISFIED WITH US?

FAXBACK: 0431- 5792930

**Questionnaire concerning
customer satisfaction – Your opinion
is important for us!**

For improving our performances
continuously, we regularly perform
questionings. Please take your time for
a moment to give us your's opinion.
Sure we guarantee you that the
requested data from you will be
processed with maximum familiarity.

Company: _____

Name: _____

Address: _____

Position: _____

Phone: _____

E-Mail: _____

product

| | very good | good | satisfactory | adequate | inadequate |
|----------------------------|-----------|------|--------------|----------|------------|
| functionality | | | | | |
| handling | | | | | |
| capabilities of innovation | | | | | |
| quality | | | | | |
| life cycle | | | | | |
| packing | | | | | |
| flexibility | | | | | |

supply

| | very good | good | satisfactory | adequate | inadequate |
|--------------|-----------|------|--------------|----------|------------|
| appointment | | | | | |
| completeness | | | | | |
| quality | | | | | |

service

| | very good | good | satisfactory | adequate | inadequate |
|---------------|-----------|------|--------------|----------|------------|
| competence | | | | | |
| pleasantness | | | | | |
| reachability | | | | | |
| response time | | | | | |
| quality | | | | | |

costs

| | very good | good | satisfactory | adequate | inadequate |
|---------|-----------|------|--------------|----------|------------|
| quality | | | | | |
| costs | | | | | |

contact

| | very good | good | satisfactory | adequate | inadequate |
|----------------------|-----------|------|--------------|----------|------------|
| pleasantness | | | | | |
| competence | | | | | |
| flexibility | | | | | |
| response time | | | | | |
| contact frequency | | | | | |
| product presentation | | | | | |

comments

| |
|--|
| |
| |
| |
| |
| |
| |

Questionnaire concerning customer
satisfaction. Your opinion is important
for us!

date

signature



videte IT® AG
Westring 431
Gebäude 30, Eingang 7
24118 Kiel
Germany
fon +49 (0) 431 579 29-0

videte IT® AG
Unit 12, Falcons Gate
Dean Road
Yate, Bristol
BS37 5 NH
United Kingdom
phone +44 (0) 14 54 319 113

www.videte.com